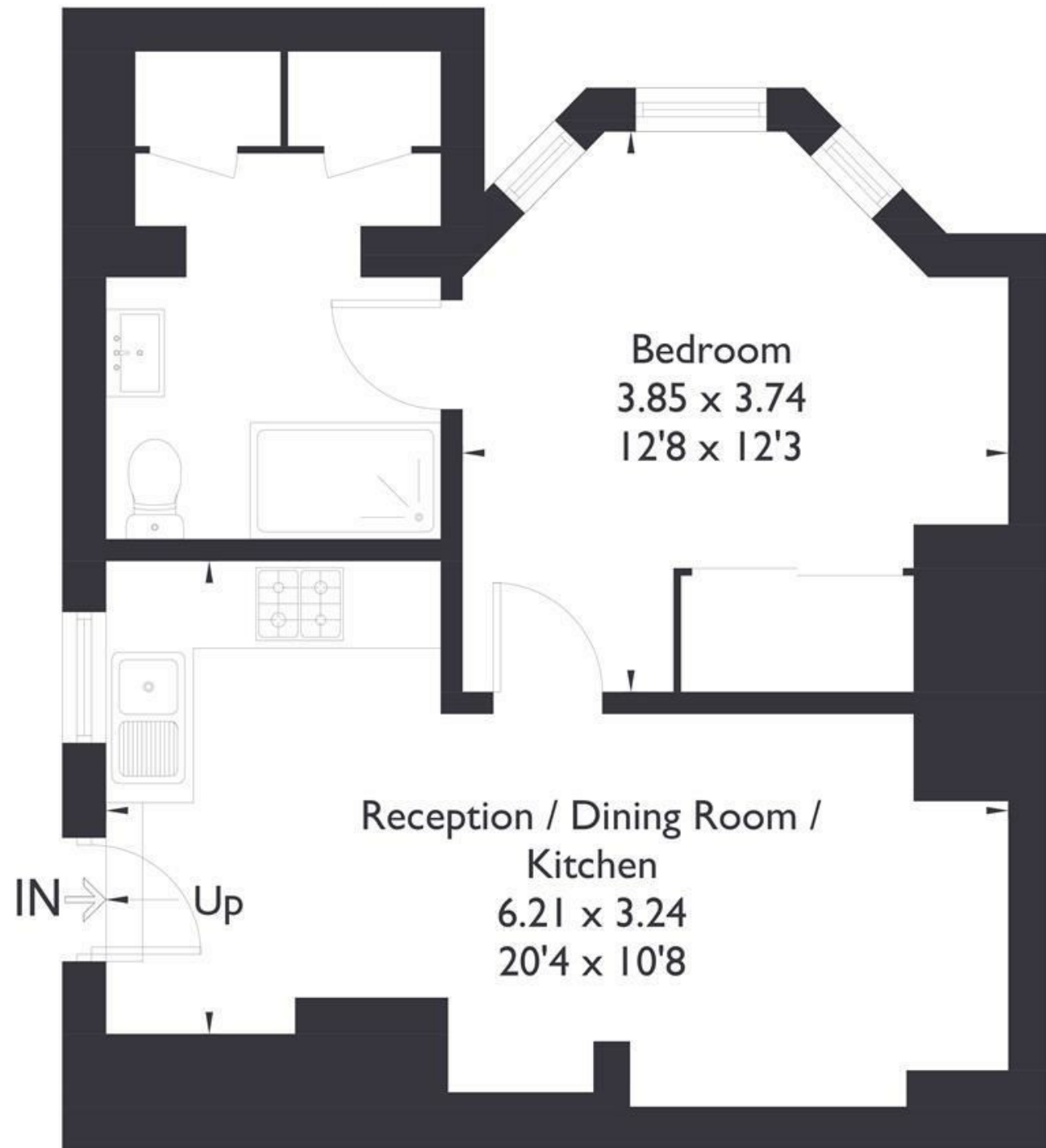


Windsor Road, W5

Approximate Floor Area = 41.2 sq m / 443 sq ft



Lower Ground Floor



FLAT

FEATURES

Windsor Road W5
£1,550

FLAT

Windsor Road W5

£1,550

Recently redecorated one double bedroom flat situated on one of Ealing Broadway's most popular roads, affording easy access to all the amenities and transport links Ealing has to offer. The accommodation comprises open plan fitted kitchen, bright lounge and double bedroom with built in wardrobes and good sized bathroom with shower cubicle.

